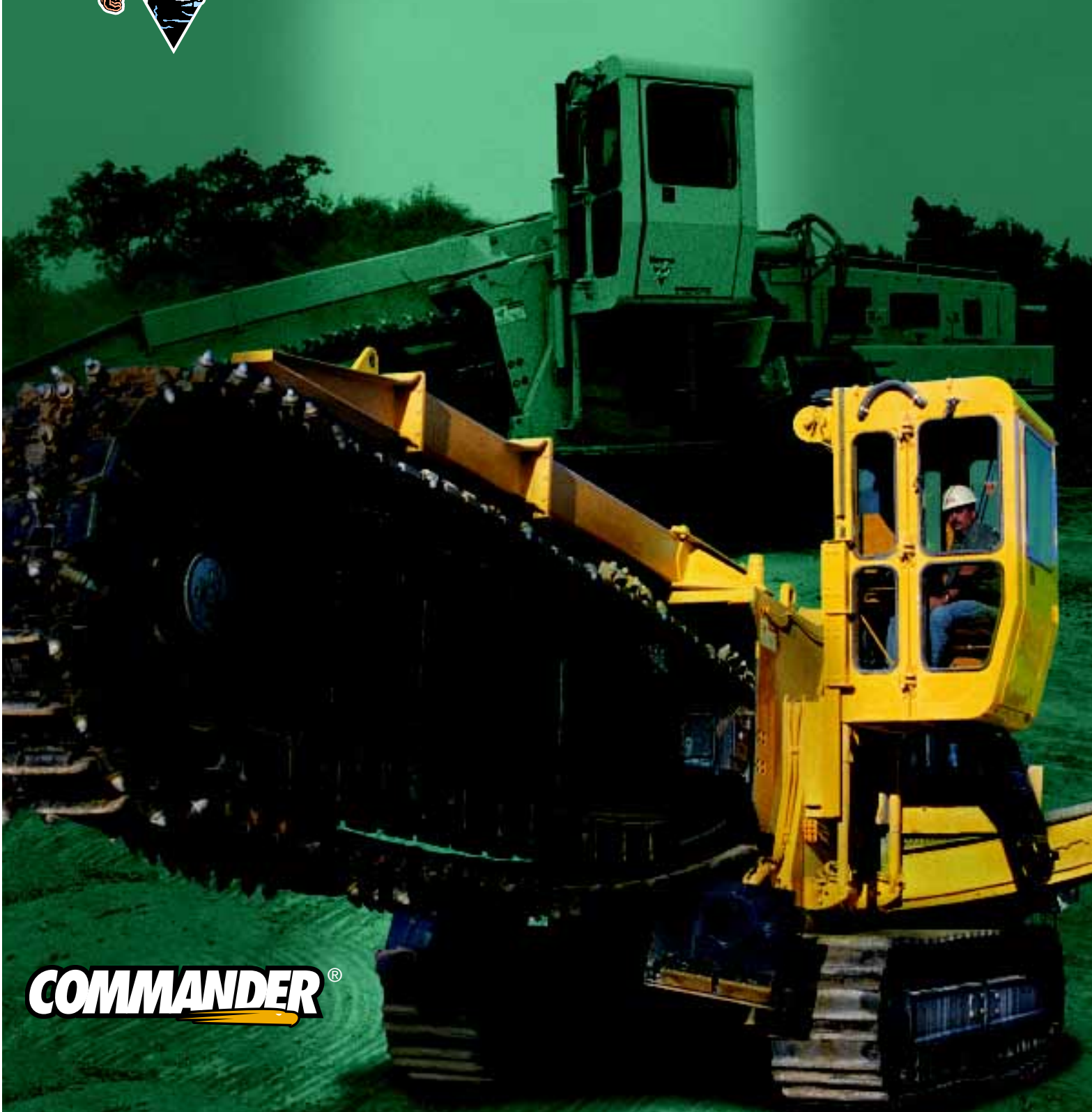


**HYDROSTATIC  
TRENCHERS**

**Vermeer**<sup>®</sup>



**T1055**



**COMMANDER**<sup>®</sup>

# COMMANDER®

# T1055

## HYDROSTATIC TRENCHER

### Big Trenching Power.

Introducing the Vermeer® T1055 COMMANDER® rock trencher, one of the largest Vermeer production rock-trenching machines. The T1055 offers the high horsepower and deep digging depths necessary to tackle a variety of trenching projects. At the heart of the T1055 is a tough Caterpillar C-12 425 hp (317 kw). The T1055 meets all emission standards and features increased torque rise, which allows the engine to recover quickly in situations that demand high power.

### Smart Features, Long Life.

A top-of-the-line rock trencher, the T1055 features patented TEC 2000.2® controls, sectionalized boom, Rotary Power headshaft motor, splined headshaft and premium elevating cab. Additionally, the T1055 boasts high-alloy easy-access floating bottom wear strips, boom top rollers and a D7 track chain (the heaviest in its class). These features combine to make the T1055 one of the toughest, most flexible rock trenchers available.

### Maximum Rock- Trenching Muscle.



**A Rotary Power headshaft and splined headshaft produce lower speed and higher torque, giving you superior rock penetration and low chain wear for better production results.**



**A 425 hp (317 kw) Caterpillar engine provides the raw power needed to triumph over tough rock-trenching projects. The engine is emissionized and features increased torque rise, allowing engine RPMs to recover rapidly in situations that demand increased power.**



**A premium elevating cab** positions the operator between the conveyor and boom for a clear view. The cab features a swiveling seat, LEXAN windows, filtered and pressurized air, heating and air conditioning.

**Sectionalized boom lengths** increase work efficiency. The 8', 10', 12' or 14' (2.4 m, 3.0 m, 3.7 m or 4.3 m) boom lengths offer job flexibility and eliminate the time and effort of changing booms.





**The TEC 2000.2 Trencher Electronic Control System** monitors operating conditions, measures full-range ground speed and headshaft speed, and informs the operator of real-time machine performance to help increase productivity and reduce wear to the machine. An electric stroke limiter increases engine control, and the AutoPlunge feature eliminates operator error from the most abusive aspect of trenching.

## T1055 Primary Specifications

### General

Approximate weight w/ 14' (4.3 m) boom,  
28" (71 cm) cut: 115,000 lb (52,164 kg)  
Transport height: 138" (351 cm)  
Transport width: 118" (300 cm) w/  
24" (61 cm) grousers  
Length w/ 14' (4.3 m) boom:  
492" (1250 cm)  
Ground clearance: 12" (30 cm)  
Angle of approach: 15°  
Ground-bearing pressure: 24" (61 cm) pads  
— 13.75 lb/in<sup>2</sup> (.97 kg/cm<sup>2</sup>)

### Hydraulic System

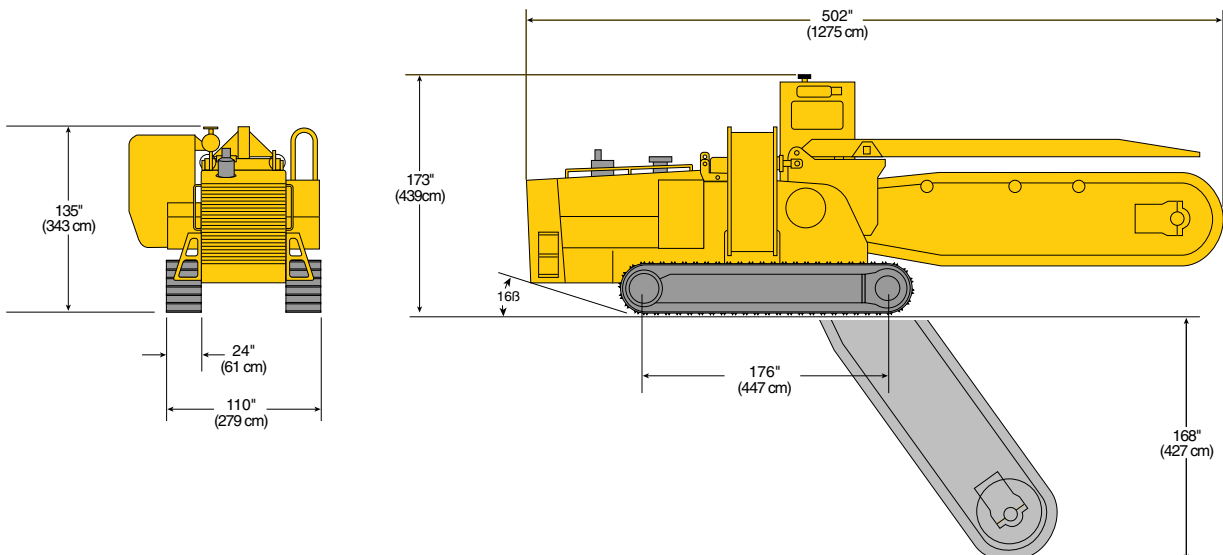
Type: Pressure and flow-compensated  
(load-sensing)  
Pump-flow max.: 26 gpm (98 L/min)  
Pressure setting: 2500 psi (172 bar)  
Oil-tank capacity: 152 gal (575 L)  
Oil type: Vermeer HyPower 68  
Vermeer HyPower 100 (optional)

### Options

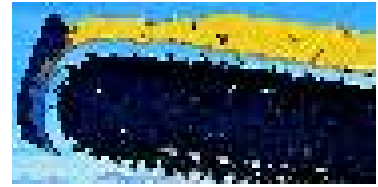
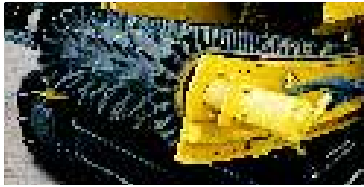
Vantage Track 3- or 5-Year/3000-  
or 5000-Hour Extended-Care  
Service Program

### Engine

Model: CAT C-12  
Aspiration: ATAAC  
Number of cylinders: 6  
Max. no-load RPM: 2250  
Gross horsepower: 425 hp (317 kw)  
@ 2100 RPM  
Cooling medium: Liquid  
Air cleaner: Dry-type, aspirated  
Oil filter: Full-flow  
Electrical system: 24-volt  
Fuel-tank capacity: 184 gal (697 L)  
Fuel consumption @ full load:  
20.6 gph (78.0 L/h)  
Operating range: 8.9 hr



# T1055 COMMANDER Specifications



## Conveyor

*Closed-loop hydrostatic system driving two motors*

Belt speed: 0 fpm – 1050 fpm (0 m/min – 320.0 m/min)

Conveyor belt width: 30" (76 cm)

Conveyor length: 9'/14" (2.7 m/4.3 m)

Discharge height: 78" (198 cm)

Shift travel: 65" (165 cm)

Belt: Cleat or finger-type w/ convoluted side walls, center guide rib, 2-ply

Drive pulleys: Wing-type, self-cleaning

## Controls

TEC 2000.2

LCD digital display

Straight tracking

Load control

Expanded self-diagnostics

Operator presence

Neutral-start indicators

AutoPlunge

Headshaft speed

Ground-speed tracking

Electric stroke limiter

## Tracks

Dual-path hydrostatic drive w/ planetary transmission capable of full counter-rotation

Infinitely variable speed:

Transport — 0 mph – 1.4 mph (0 km/h – 2.3 km/h);

digging — 0 fpm – 55 fpm (0 m/min – 16.8 m/min)

Max. tractive effort:

113,800 lb (51,620 kg)

Service brakes: Hydrostatic

Parking and secondary brakes:

Spring-applied, hydraulic-release wet-disc brakes

Length, centerline to centerline:

175" (445 cm)

Track-pad type:

Standard — 24" (61 cm) double grouser;

optional — 24" (61 cm) single grouser;

30" (76 cm) double grouser

Track-pad quantity: 52

Overall width: 118" (300 cm) w/

24" (61 cm) grousers

Track-chain type: D7

Track-chain pitch: 8.5" (22 cm)

Track-chain tensioning: Compressed coil spring w/ grease cylinder

Track-roller quantity: 10 per track

Track rollers: Sealed and lubricated

## Trencher

Boom travel: Up — 5°; down — 55°

Digging chain: D6

Cutters: Rotary, carbide-tipped

End-idler diameter: 50" (127 cm)

Boom bottom wear strips:

Floating, replaceable

Digging chain drive sprocket:

Split-type, hardened, bolt-on

Boom top rollers: Optional

Digging chain speed:

High-speed motor w/ 19 tooth sprockets — 406 fpm – 580 fpm (123.7 m/min – 176.8 m/min);

high-speed motor w/ 17 tooth sprockets — 365 fpm – 521 fpm (111.3 m/min – 158.8 m/min);

low-speed motor w/ 19 tooth sprockets — 341 fpm – 487 fpm (103.9 m/min – 148.4 m/min);

low-speed motor w/ 17 tooth sprockets — 306 fpm – 437 fpm (93.3 m/min – 133.2 m/min)

Headshaft bearings: Oil-filled w/

Duo-Cone face seals

Pull-ring assembly: Integral to main frame

Max. boom options:

8' x 42" (2.4 m x 107 cm) D6 chain and 5501 chain;

10' x 36" (3.0 m x 91 cm) D6 chain and 5501 chain;

12' x 32" (3.7 m x 81 cm) D6 chain and 5501 chain;

14' x 28" (4.3 m x 71 cm) D6 chain and 5501 chain



## VANTAGE TRACK

*Protect your trencher with our optional 3-Year/3000-Hour or 5-Year/5000-Hour Vantage Track Extended-Care Service Program — a Vermeer exclusive! Ask your dealer about it.*

**Worldwide coverage with a local touch.** Your independent, authorized Vermeer dealer knows your local conditions and is ready to provide expert sales, support, service and parts — wherever your job site.



**Vermeer Manufacturing Company**

1210 Vermeer Road East  
P.O. Box 200  
Pella, Iowa 50219 U.S.A.  
Phone: (641) 628-3141  
Fax: (641) 621-7734  
International fax: +1 (641) 621-7730  
[www.vermeer.com](http://www.vermeer.com)

**Call toll-free 1-888-VERMEER**

*1-888-837-6337 (U.S.A. only)*

**Europe, Middle East and Africa:**

P.O. Box 323  
4460 AS Goes  
Netherlands  
Phone: +31 113 272700  
Fax: +31 113 272727

Vermeer Manufacturing Company reserves the right to make changes in engineering, design and specifications; add improvements; or discontinue manufacturing at any time without notice or obligation.  
VERMEER, VERMEER LOGO, TEC 2000.2 and COMMANDER are registered trademarks of Vermeer Manufacturing Company in the U.S. and/or other countries.  
LEXAN is a trademark of General Electric Company. CATERPILLAR and CAT are trademarks of Caterpillar Inc. ROTARY POWER is a trademark of Rotary Power, Inc.

© 2002 Vermeer Manufacturing Company  
All Rights Reserved